

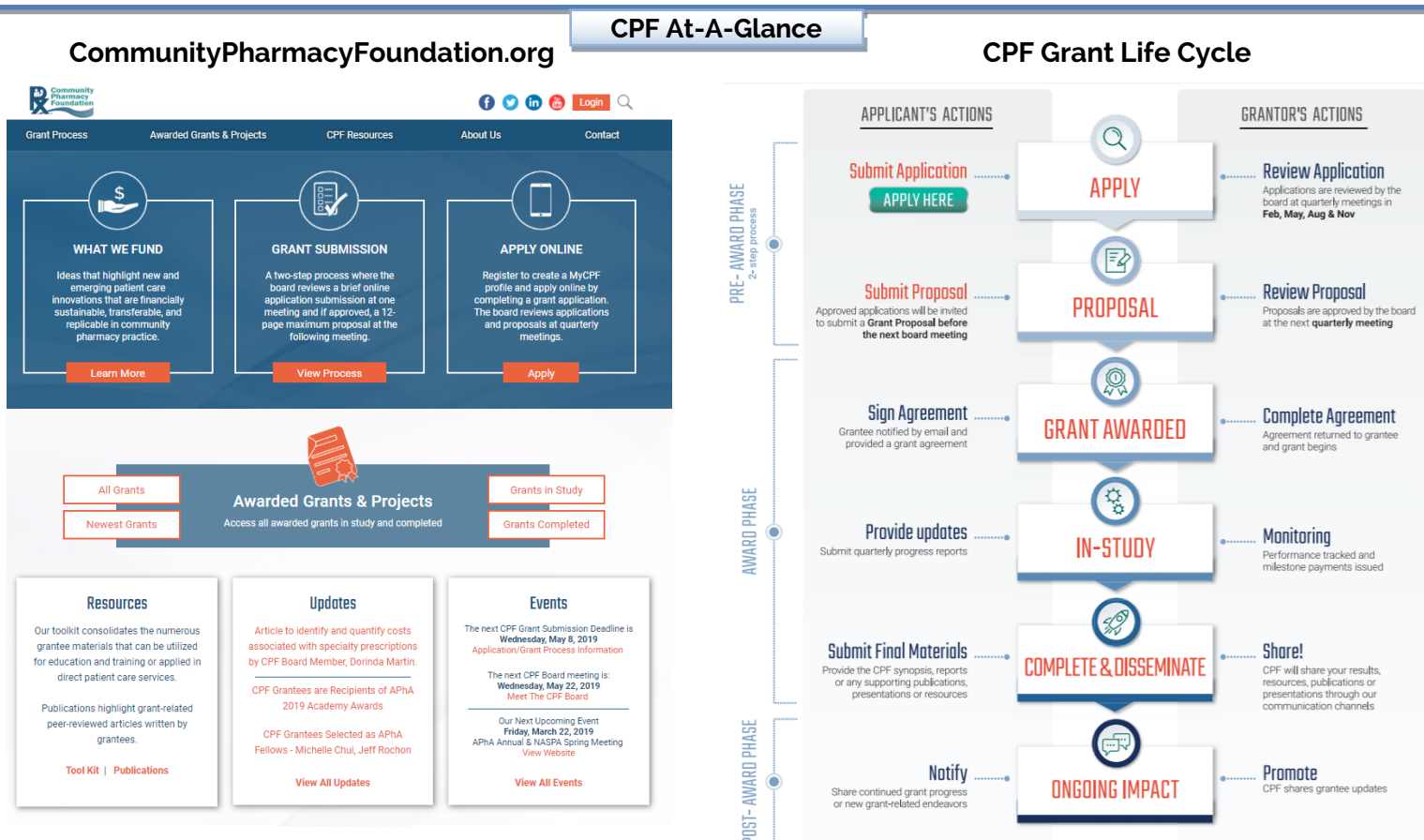
The Community Pharmacy Foundation (CPF) funds grants that highlight new and emerging patient care innovations that are financially sustainable, transferable, and replicable in community pharmacy practice.

GOAL 1: The Community Pharmacy Foundation will invest in grant making to advance community pharmacy by supporting innovative projects and initiatives such as, but not limited to, the following:

Patient Care Best Practices	<ul style="list-style-type: none"> ➤ Identify the impact of CPF grants on the profession, academicians and community pharmacy practitioners. ➤ Increase consumer awareness of the value of pharmacists' services. ➤ Capture and integrate the voice of the patient into models of care.
Health Care Delivery Models	<ul style="list-style-type: none"> ➤ Continued grant support for topics of payment reform, delivery reform and real-time data integration for innovative ideas that advance the practice of community pharmacy. For example, <ul style="list-style-type: none"> • Value-based compensation for pharmacist services/care (moving from volume to value) • The pharmacists' role in emerging and/or redesigned care delivery models • Attribution of pharmacist service outcomes in team-based care
Provider Status	<ul style="list-style-type: none"> ➤ Collaborate to advance national, state and regional community pharmacy transformation leading to 'coverage for' and 'access to' pharmacists' services.
Future Practice	<ul style="list-style-type: none"> ➤ Catalyze the preparation of pharmacists through grants, projects and collaborations to assure they are ready for value-based payment and provider status recognition.
Advocacy	<ul style="list-style-type: none"> ➤ Collaborate with national organizations to support advocacy initiatives.

GOAL 2: The Community Pharmacy Foundation will invest in communication and collaboration initiatives to advance community pharmacy.

CPF Grants	<ul style="list-style-type: none"> ➤ Deliver an improved virtual experience to make grant results and resources broadly available. ➤ Demonstrate the value of community pharmacy by sharing grant results, peer reviewed publications, and applied practice experiences. ➤ Enhance communications with colleges of pharmacy, pharmacy practitioners, and healthcare organizations to increase collaborative initiatives. Maintain communications and information access to internal and external stakeholders
-------------------	--



CPF is looking for the next great idea to advance the practice of pharmacy in the community setting.